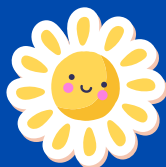


MAY 2025

HEADTEACHER NEWSLETTER

Summer Term 1, 2025

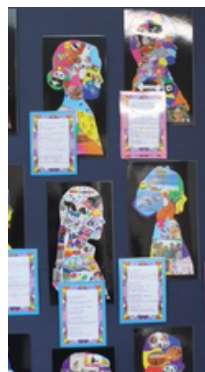


TOP NEWS

School Council

Year 6

School Choir



Message from Mrs Leith

Over the past two terms the members of the school council have been busy meeting to discuss various topics and actions that they want to complete. They have also had joint meetings with fellow school councillors from Kingswood Primary School. **Our School Councillors** have launched a new suggestion box for pupils. The purpose of this box is to ensure children have more opportunities to share their feedback with staff. This empowering resource will enable children to think critically and use their voices in respectful ways.

This term has been a busy term for the children in Year 5. Twenty children in Year five were interviewed and then appointed to a new **Play Leader** team. Play Leaders will work with staff to make lunchtime play even more fun for children.

They will model new games, support children who want an extra friend to play with and lead fun activities in the playground. They will also have regular meetings where they will learn skills such as collaboration, critical thinking and leadership. Children had training in school and in the playground, to prepare them for this important role. Congratulations to all of our newly appointed Play Leaders.

Thank you to all of the parents and carers who have attended the parent events that have taken place so far this school year. One of the events that is still to take place is aimed at our **Year 5 Parents and Carers** and it is the first of two sessions on applying for secondary schools. **In this session, which is taking place on 13.06.25, we will talk you through the process of selecting and applying for a secondary school for your child.**

Please follow this link to access more information on the [Parent Events](#) which are taking place after the half term holidays.

Please enjoy the school holidays next week and I look forward to seeing you all back at school on 02.05.25.

Mrs Leith

School Council: Careers Fair

School Councillors have been involved in the planning process for a new **Careers Fair** event for children, from the beginning.

The purpose of this event is to inspire, inform and empower children about different careers. We also want to help them make links between learning in school and the workplace.

Children generated ideas and then mapped out their hopes for the event. They wrote letters asking for parent volunteers and then decided to create & lead a stall of their own.



More information about this event will be shared in Summer Term two.

Dates for the diary...

23.05.25
Ice Lolly Sale at School from 15.30

26.05.25 to 30.05.25
School closed for the Spring Half Term Holidays

02.05.25
Children return to school

12.06.25
Elm Wood Careers Fair

18.06.25 to 20.06.25
Year 6 Residential

26.06.25
Sports Day
Key Stage 1 (10.00 to 12.30)
Key Stage 2 (12.30 to 15.00)
at Dulwich College

04.07.25
School Closed for INSET DAY

11.07.25
EYFS Sports Day (14.00)

12.07.25
Friends of Elm Wood Summer Fair

22.07.25
School closes at 2pm for the Summer Holidays



Attendance

I would like to take this opportunity to thank you all for helping your children to come to school every day.

I often get questions from parents and carers linked to their child's attendance at school. Below I have tried to capture the key facts that I share regularly with parents.



School Attendance facts:

- The government says that children should have an attendance of at least 95%
- Having 90% attendance is like having one school day off every two weeks
- Having 85% attendance is the same as missing a whole half term of school
- Having 80% attendance is like having one school day off every week
- If you have a two-week holiday during school time each year, you will have missed 14 weeks of school by the end of year 6

Term Dates: [2024 - 2025](#) and [2025 - 2026](#)

Learning Updates

Each class teacher uploads weekly learning updates on **Weduc**. Please follow this link to access these updates for your child's class.



Please contact the school office if you need assistance to log into Weduc.

Important messages!

- Please ensure that all **bikes and scooters** are collected at the end of each Term. Any bikes or scooters that are left on school grounds at the end of this term (22.07.25) will be removed and disposed of.
- Please ensure that you collect any **Lost Property** at the end of each term as uncollected items will be donated to charity or removed from school and disposed of.
- Parent Fines for Missing School:** Fines will be considered when a child has missed 10 or more sessions (5 days) for unauthorised reasons. From August 2024, the fine for school absences will be £80 if paid within 21 days, or £160 if paid within 28 days. In the case of repeated fines, if a parent receives a second fine for the same child within any three-year period, this will be charged at the higher rate of £160.

School Uniform

In the warmer weather the children can wear the following items to school:

White short sleeved polo shirt
Summer dresses made of green gingham
Grey Shorts

Please note that on hot weather days we will not expect the children to wear their school ties or blue blazers.

All children are to continue to wear black school shoes as part of their school uniform.

More information on our school uniform can be found on our [School Website](#)



End of Year Celebration Assemblies

Nursery to Year 5



Date	Class	Time
01.07.25	Wren Class (Reception)	10.00
01.07.25	Merlin Class (Reception)	14.45
02.07.25	Swift Class (Year 1)	10.00
02.07.25	Magpie Class (Year 1)	14.45
03.07.25	Redwing Class (Year 2)	10.00
03.07.25	Goshawk Class (Year 2)	14.45
08.07.25	Skylark Class (Year 3)	10.00
08.07.25	Siskin Class (Year 3)	14.45
09.07.25	Kittiwake Class (Year 4)	10.00
09.07.25	Waxwing Class (Year 4)	14.45
10.07.25	Sanderling Class (Year 5)	10.00
10.07.25	Teal Class (Year 5)	14.45
11.07.25	Jay Class (Nursery)	10.00

London Brick Festival

The London Brick Festival is an exciting celebration of all things LEGO, but it isn't just about fun – although it is absolutely packed full of that too! Brick Festival events also invite visitors to explore a range of STEM subject skills through the medium of LEGO bricks.

How do you become more interested in Science, Technology, Engineering and Maths? By understanding them. And how do you best understand things? By having fun while learning. LEGO is the perfect tool for developing new skills, exploring new ideas and having new adventures.

Please click the image to find out more information and purchase tickets



<https://www.elmwoodprimary.co.uk/>

Year 6

Last week the children displayed resilience and success when undertaking their SATs papers. All the adults in the school who were involved in the process felt incredibly proud of all the children, and were impressed with their knowledge and positive attitudes. Children across both classes supported each other and showed great team spirit and enthusiasm for their learning.



It was also wonderful to see how respectful and supportive the rest of the school was during this busy time.

Over the next two months, children in year 6 now have an opportunity to consolidate their primary school learning and prepare themselves for secondary school. At this point in the year, they have a great deal to look forward to: we are planning to take them on an exciting outing with the funds they successfully raised at the spring fair, they will be rehearsing and taking part in a school production (some will be providing support behind the scenes with props/costumes etc), they will have the chance to compete in sports tournaments and will take part in weekly swimming lessons. They will also be leading sports day at Dulwich College.

Year 6 have embraced every challenge we have presented them with and as they approach the end of their primary school journey, they are setting a brilliant example for the younger pupils.



Year 6 Dates for the Diary....

17.07.25
Year 6 Performance
Charlie and the Chocolate Factory
10.00 and 14.15

21.07.25
Year 6 Leavers Assembly at 14.30



School Choir

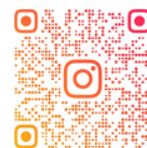
On Saturday 17th May, the Elm Wood choir (Annabelle, Carmen, Edie, Zola, Sophia, Molly F, Mollie B & Lily) performed with Mr Kelly at the **Dulwich Spring Fair**. Despite the fact there were only 8 children, they sang very loudly and beautifully to an audience of about 40 people.

They sang songs they had performed at the Royal Festival Hall (Stargazing, Can You Hear My Voice), as well as other songs they have been learning in choir (Walk On By, Die With A Smile) and the old favourites Count On Me and the Mango song. Everyone had a great time, and lots of people in the audience commented how amazing they were. Congratulations to them all.



Helen Hayes, MP for Dulwich and West Norwood, was there when Elm Wood performed and also said how well they performed.

Helen Hayes even mentioned us in one of her Instagram posts. Please scan the QR code to see the post.



POST SHARED ON 18 MAY
BY HELEN HAYES

Punctuality

School starts at 08.55

Punctuality is an essential life skill that needs to be taught from the very beginning.

Having good **attendance** also means being on time and not being late to school.

Children who arrive late can feel embarrassed, left out and miss out on important introductions to lessons.

