

DECEMBER 2023



TOP NEWS

Sporting Achievements

Independent Learning Projects

Christmas Celebrations

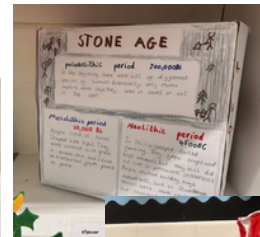
Message from Mrs Leith

Thank you for your continued support over the past term. It has been a very busy term. There have been sporting events, Christmas celebrations, many class trips and of course the normal day to day learning that we provide for all our children.

We have also held many successful parent events this term and we are now planning more of these for the Spring term. Please can I thank all of you who took the time to provide the school with feedback linked to these events so that we can plan purposeful parent events in the future. Key dates for these events will be shared in January 2024.

This term I have really enjoyed the children sharing their Independent Learning Projects with me. These projects are set by the teachers and are closely linked to the learning that is taking place in the classroom.

I have captured some of these projects in the images opposite! Independent Learning Projects are a great way for children to further explore their in class topic and to share their learning with their families at home! I am looking forward to seeing even more of these in the Spring term.



Mrs Leith

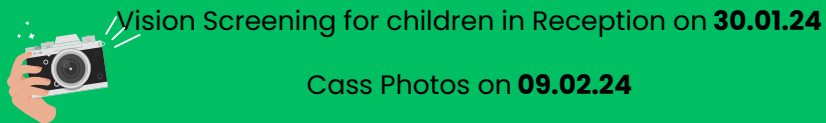
Dates for the diary...

Christmas Jumper Day on **21.12.23**



School closes at 2pm for the Christmas Holidays on **21.12.23**

All pupils return to school on **08.01.24**



Vision Screening for children in Reception on **30.01.24**

Cass Photos on **09.02.24**

Friends of Elm Wood Chinese New Year Cake Sale on **09.02.24**

February Half term is **12.02.24 to 16.02.24**

School Closed for INSET Day - **19.02.24**



All dates for Parent Events to be shared in January



Thank you to all members of the Friends of Elm Wood who have worked together to provide some fantastic events for all members of our Elm Wood Family this term.

These have included:

- Celebrations linked to Black History Month
- Celebrations linked to Diwali
- Wet Play Games for all classes
- Mud Kitchens for Nursery and Reception
- Celebrations linked to Christmas

These events and resources help us as a school to ensure that we are providing our children with rich experiences.

We are looking forward to the events that will take place in the Spring Term.



Christmas Celebrations

The children have all been very busy in school recently with their Christmas Celebrations.

The children in Nursery and Reception made some beautiful Christmas crafts with their family members.

Year 1 and 2 put on a marvelous performance of Born in a Barn. This performance was enjoyed by all who took part and by all who watched it! Well done Year 2 for remembering all of your lines!

Each of these events were very well supported by all parents and carers. I would like to thank you all once again for taking timeout of your busy lives to spend sometime with us at Elm Wood.

I would also like to thank each and every member of the Elm Wood team for their contribution to the success of each of these events.



Foodbank Collection

Thank you once again to everyone who brought food into school for the local Foodbank. This fantastic amount of food has already been shared with the foodbank and will be on its way to families in our local community soon.

We will continue to do more collections in both the Spring and Summer Terms.



School Website

As a team we are working really hard to update our school website. Please do take sometime to have a look at all of the key information captured.

Please follow this link to access the school website.

[Elm Wood Primary School Website](#)

Primary School Admissions

Find out about applying for a Reception class place for September 2024. For 2024 entry, this is for children born between 1 September 2019 and 31 August 2020.

Please follow this link to access

[Starting primary school in Lambeth 2024/25](#)

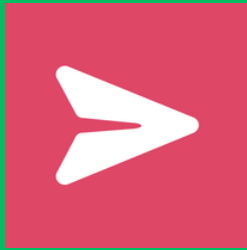
All applications need to be completed by 15.01.2024

Please [click here](#) to access more information from Lambeth regarding this process.

Please do remember to contact the school office if you would like further support with this application process.

Learning Updates

Each class teacher uploads weekly learning updates on **Weduc**. Please follow this link to access these updates for your child's class.



Please contact the school office if you need assistance to log into Weduc.

Important messages!

- Please can we remind all children that they **should not be bringing personal items into school** such as pencil cases and toys.
- Please can we ask that you **check at home for any reading books** that may not have found their way back to school. If you find any please return them to the school office. Thank you!



Sporting Achievements

AT Elm Wood we are very proud that we provide our children with the opportunity to represent their school through many different sports teams and competitions.

This term the competitions that we've taken part in are:

- Year 3&4 Football
- Year 5&6 Tag Rugby
- Year 5&6 Girls Football



This photo is from the Year 5&6 Football competition where Elm Wood made it to the quarter finals. Well done!!!

Attendance

Having good attendance also means being on time and not being late to school.

Children who arrive late can feel embarrassed, left out and miss out on important introductions to lessons.

Punctuality is an essential life skill that needs to be taught from the very beginning.

School starts at 08.55

